

# CMI's New 2" / 2.5" CPVC Check, 2 and 3 Port Valves

CMI's Check, 2 port & 3 port valves are manufactured from **high quality CPVC** to ensure high reliability and low maintenance. They are suitable for 2" and 2.5" high pressure PVC/CPVC pipe and utilize a Teflon seal for smooth turning action and minimal maintenance.



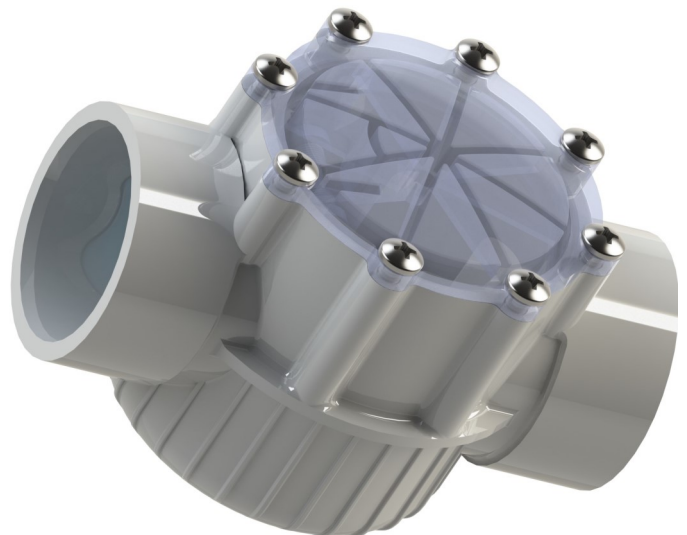
40302A



40202A

Two removable stoppers are supplied with the 2 & 3 port valves which can be installed to preset the stopping position when the valve is used manually. The stops should be removed and discarded when installing a motorized actuator.

The valves are provided with a removable handle to enable the installing of industry standard motorized actuators.



40102A